



SALES • COMPLETE SERVICE • PARTS • TOLL FREE: 1.888.737.8388 • FAX: 1.714.630.1422

C6 Custom Fit Bra



Important Instructions, Please Read Before Installation:

PART LIST:

1 LOWER COVER
1 INSTRUCTION SHEET

TOOLS REQUIRED:

SHORT PHILLIPS SCREWDRIVER
THIN PLASTIC SHIM (RECOMMENDED)

8 x SS#2



8 x PFP5



If you have any further questions you can call us at 888-737-8388
1210 N. Kraemer Blvd. Anaheim, CA 92806 / www.westcoastcorvette.com

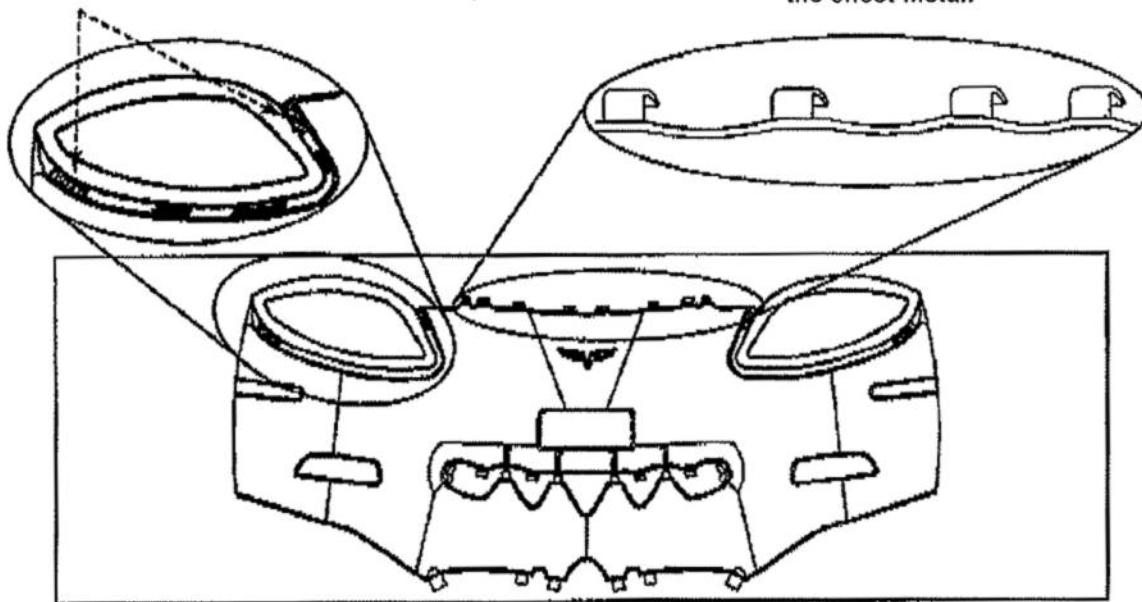
1. Your cover is backed with a soft mildew resistant porous backing. Under normal conditions, it is not necessary to remove your cover if it has become wet underneath. However, if your vehicle is not in motion and excessive moisture and strong direct sun rays are directed at your cover, remove the cover until both the vehicle and cover are completely dry!
2. Keep the underneath of your cover as clean as possible at all times. Remove monthly or as necessary and clean away dust and debris.
3. Fresh repainted areas of your vehicle in contact with the cover must be completely cured. Check with your painter about adequate cure times.
4. When you first try to fit the cover to your vehicle it may appear to be undersized. This is due to the nature of the special vinyl used which will stretch during installation to insure a tight fit. For this reason, initial installation of the mask is best performed when the cover is warm.
5. Use only a mild soap to clean your cover. Do not use harsh soaps, strong detergents or vinyl protectant/sealant type products as they may destroy the special finish of your new cover. Allow your cover to dry completely before reinstalling on your vehicle.
6. It is important that you remove your front end cover before you take your vehicle through an automatic car wash. Failure to do so may cause damage to your front end cover.
7. **DURING VERY HIGH TEMPERATURES AND SEVERE DRIVING CONDITIONS, WHEN EXTRA COOLING CAPACITY IS NEEDED, IT MAY HELP TO REMOVE THE CAR COVER.**

1. Place lower portion of the front end cover over fenders and grille of your vehicle. If you are going to use a front license plate, snip the black threads on the back of the license plate patch. Slip the vehicle license plate bracket through this opening. Once the bracket is fed through, shape the front end cover around the bumper one side at a time.
2. Attach all other fastening points per illustration.

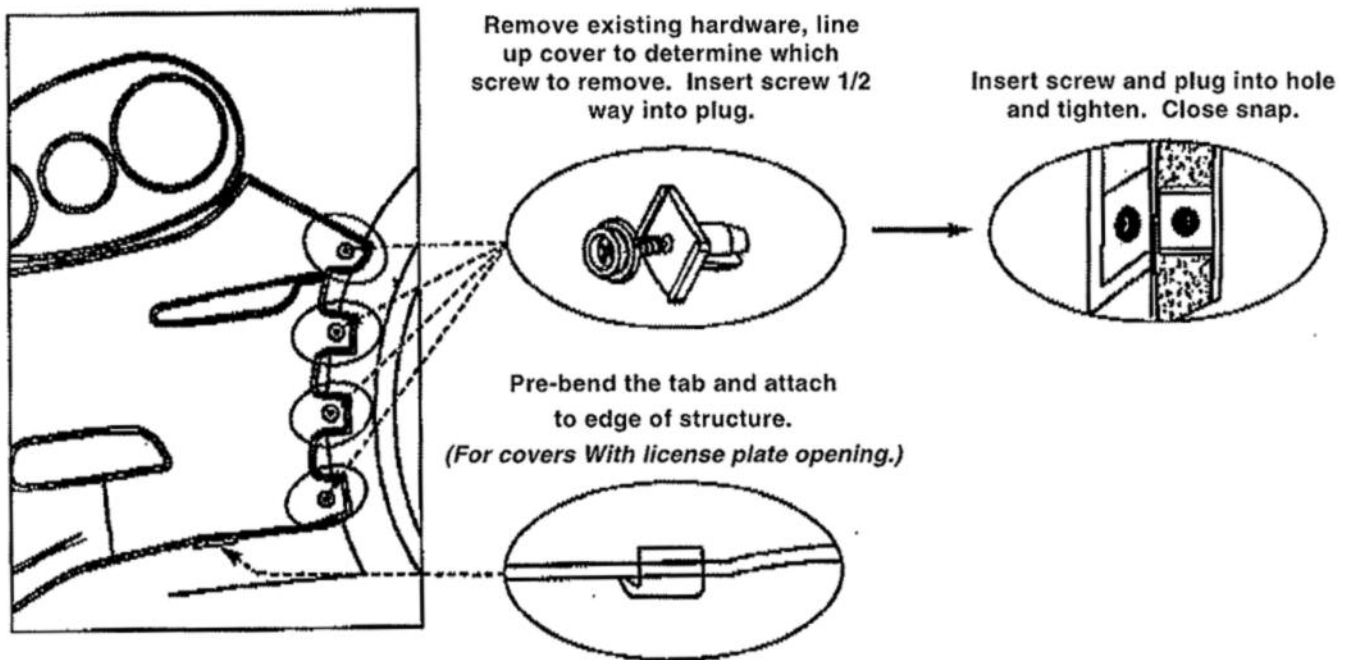
Insert tab between fascia and seal around the headlamp.

CAUTION: Do not allow the seal to be pressed into the gap. A thin plastic shim may be used to position the seal aside prior to inserting the tab.

Attach plastic clips to the edge of the sheet metal.



3. Fasten to wheel well per illustration.



4. Attach all fastening points per illustration.

Prior to installation center the cover using license plate as a guide. (For covers WITH license plate opening.)

Attach the plastic clips to the tabs behind the grille opening. (For covers WITH license plate opening.)

Pre-bend tabs and attach to edge of structure. (For covers WITHOUT license plate opening.)

